

Control Devices

Four Channel Switched Filter Assembly

Model: SWF008



Features:

- Ultra Miniature, Low Profile Design
- Fast Switching Time <100 nSec
- Hermetically Sealed, Laserwelded
- Full Military Temperature Range
- High Reliability/MTBF Design
- Equalized Band-Band
- Equalized Over Frequency

Electrical Specifications

Frequency:	4 Adjacent S to C Band Passbands
Pass Band Insertion Loss:	5 dB
Pass Band VSWR:	1.6:1 Max
Stop Band Rejection:	1dB BW \pm 700 MHz >60 dBr
Switching Speed:	100 nSec Max
Control:	TTL Compatible
RF Power (operating):	+25dBm
DC Power:	\pm 5 VDC \pm 70 mA

Mechanical Specifications

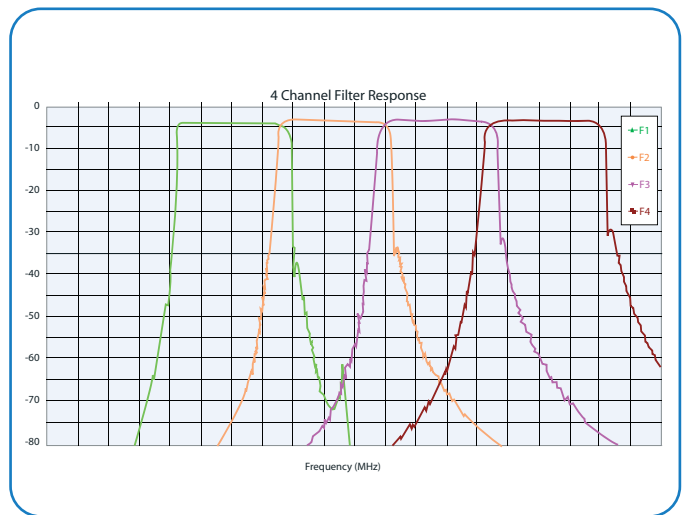
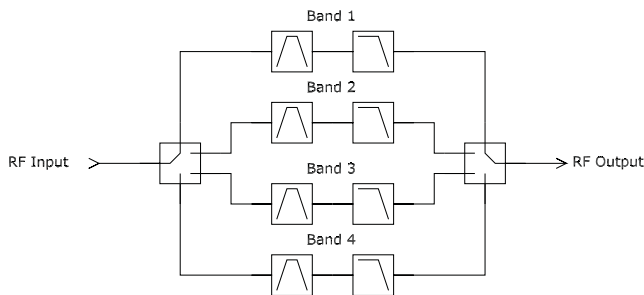
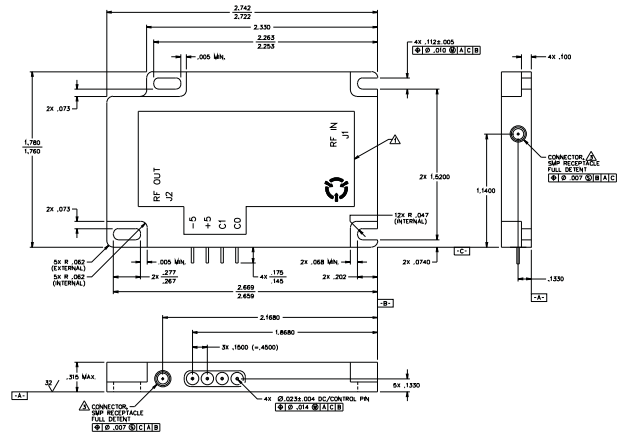
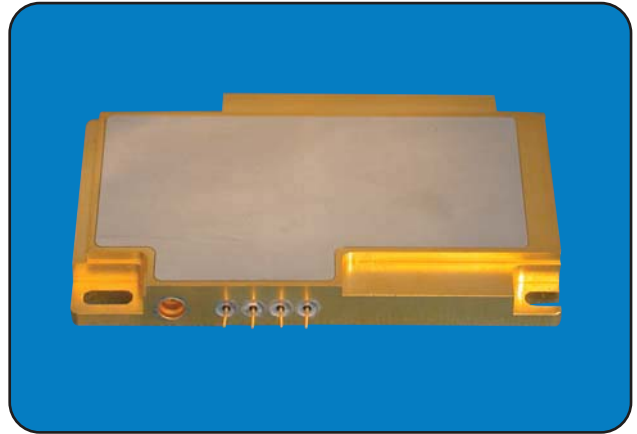
Size:	2.75" X 1.78" X 0.315"
Weight:	< 1.5 oz
RF Connectors:	Hermetic SMP (Full Detent)
DC Connectors:	EMI Filtered Solder Pins

Environmental Specifications

Operating Temperature:	-54 to +85 °C
Environment:	Airborne

Quality Assurance Provisions

Class H Hybrid Equivelant



Specifications subject to change without notice.